

# 12ET

## PRO SERIES TANDEM AXLE EQUIPMENT TRAILER

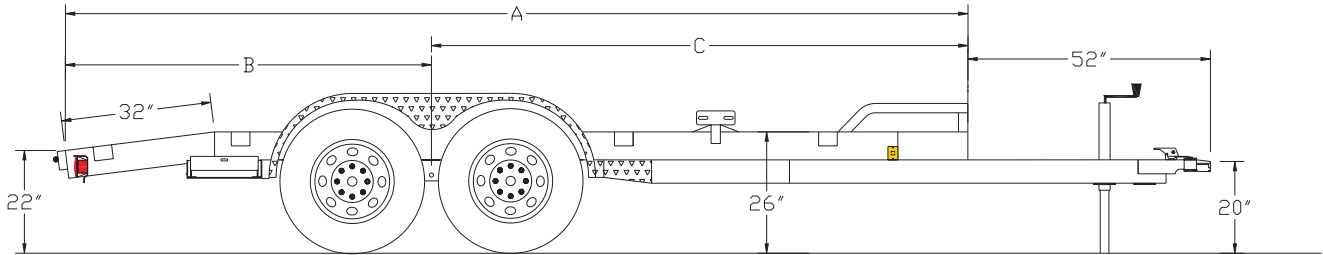
<b>G.V.W.R.</b>	12,000#	<b>AXLES</b>	Two 6,000# Cambered Axles w/ Elec. Brakes
<b>G.A.W.R. (EA. AXLE)</b>	5,560#	<b>SUSPENSION</b>	Multi-Leaf Slipper Spring w/ Equalizer
<b>COUPLER</b>	2-5/16" Bulldog	<b>TIRE</b>	7.50 X 16" Load Range E
<b>SAFETY CHAINS</b>	1/4" Grd. 70 w/ Safety Latch Hook (2 ea.)	<b>WHEEL</b>	16 X 6 White Spoke 8 Bolt
<b>JACK</b>	2000# Top Wind (Bolted On)	<b>FLOOR</b>	2" Pine
<b>TONGUE</b>	5" Channel Fold-Back	<b>LIGHTS</b>	D.O.T. Stop, Tail, Turn and Clearance
<b>TOP RAIL</b>	(none)	<b>ELEC. PLUG</b>	6 Way
<b>FRAME</b>	6" Channel	<b>FINISH (PREP)</b>	Acid Etched w/White Phosphorus, Undercoated w/Panther 813 & Two Coats Primer
<b>CROSSMEMBERS</b>	3" Channel	<b>FINISH</b>	Painted w/ 2 Coats High Solid <i>Supreme</i> Acrylic Automotive Grade Enamel, and Pinstriped
<b>UPRIGHTS</b>	(none)		
<b>FENDERS</b>	9" X 72" Diamond Plate Teardrop w/ Back		

### STANDARD FEATURES

- Two 6,000# Axles w/ 2 Electric Brakes
- Complete Break-A-Way System w/ Charger
- 2-5/16" Bulldog Forged Coupler
- Safety Chains Attached w/ Cold Rolled Eyelets
- Spare Mount
- Lower Jack Support Plate
- 32" Dovetail
- 2" Tubular Stop Rail
- Reflective Marker Tape
- 4' Slide In Ramps
- Chamfered Front w/ Diamond Plate
- Tie Down Pockets - Sides, Front & Rear
- Floor Secured w/ 5/16" Torx Screws
- Fold Back Tongue w/ Set Back Jack

### 12ET-16

LENGTH	DIMENSIONS		
	A	B	C
16'	193-1/2"	78-1/2"	115"
18'	217-1/2"	90-1/2"	127"
20'	240"	102"	138"



### OPTIONS

<b>NBK2</b>	Electric Brakes On 1 Axle Only
<b>HYD1</b>	Hydraulic Brakes On 1 Axle w/ Adjustable Demco Actuator
<b>HYD2</b>	Hydraulic Brakes On 2 Axles w/ Adjustable Demco Actuator
<b>SP</b>	16" Spare Tire & Wheel - Load Range E
<b>DLJ</b>	7K Drop Leg Jack
<b>SF</b>	1/8" Diamond Plate Steel Floor (Per Sq. Ft.)
<b>HDLJ</b>	10K Top Wind Drop Leg Jack (Top Wind)
<b>AP</b>	Adjustable Pintle In Channel

Effective January 1, 2003 (Specifications and Options subject to change without notice.)